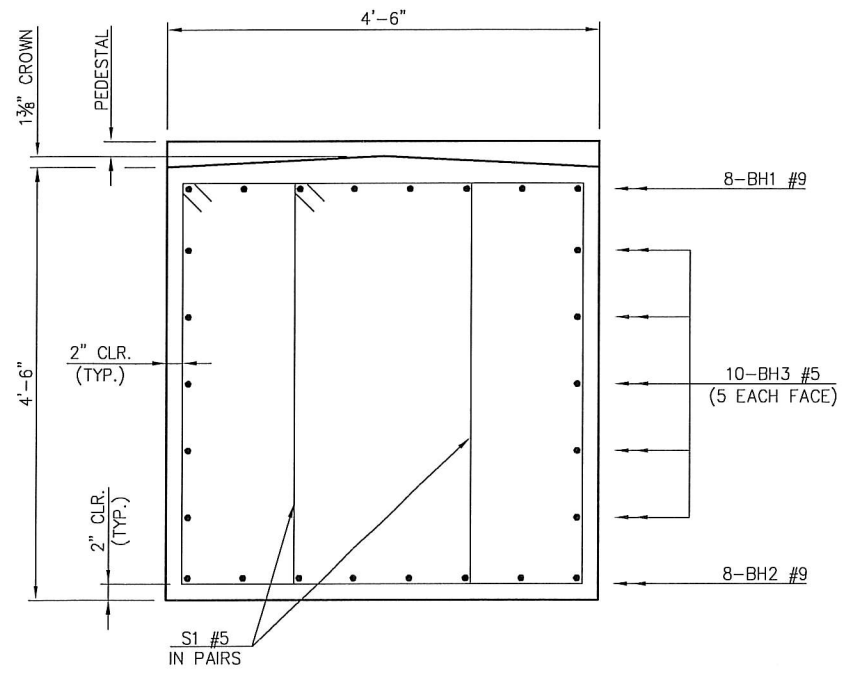
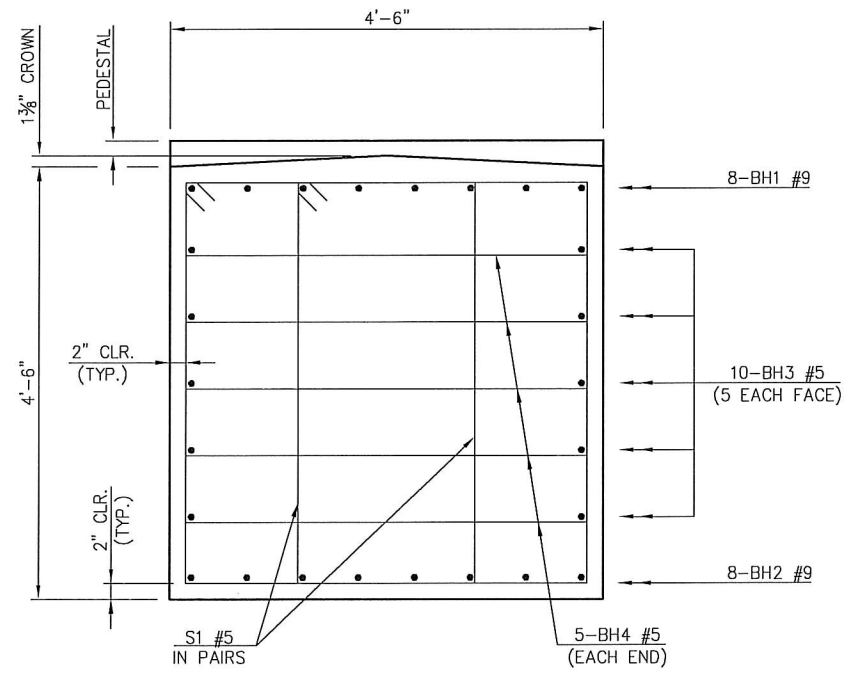


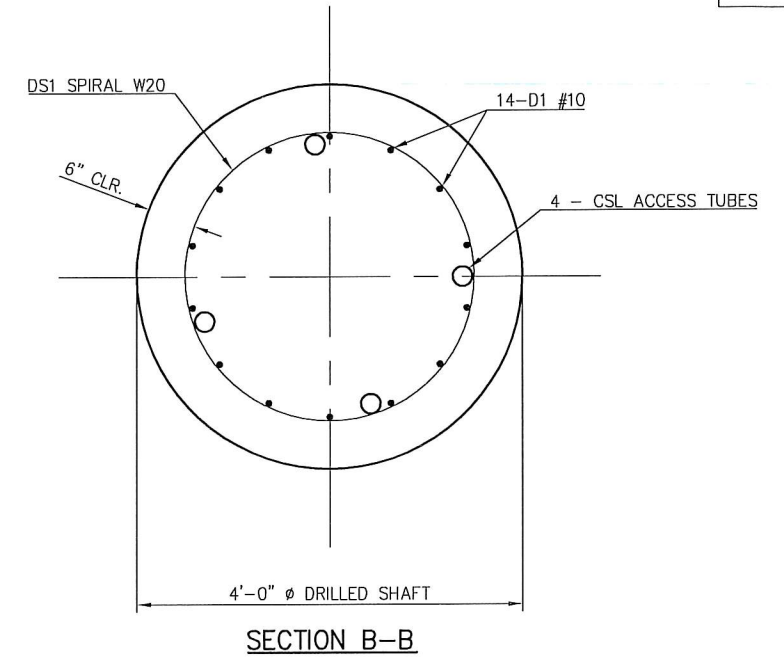
DESCRIPTION	REVISIONS	DATE



SECTION A-A



END SECTION

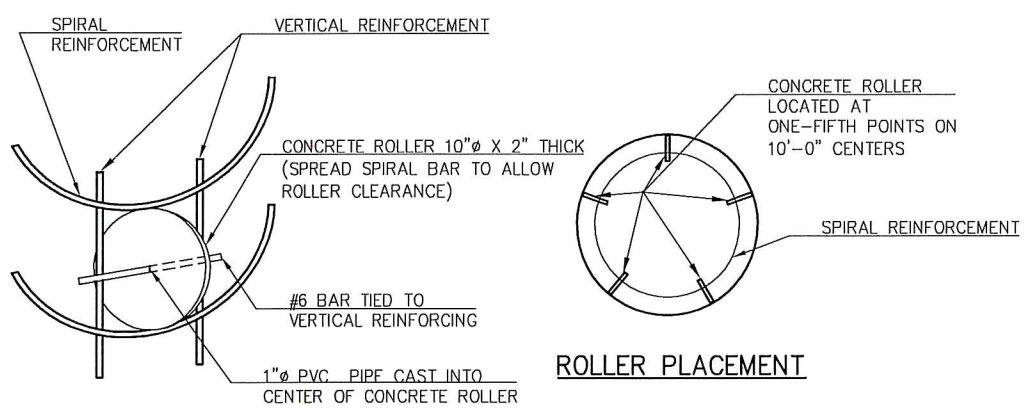
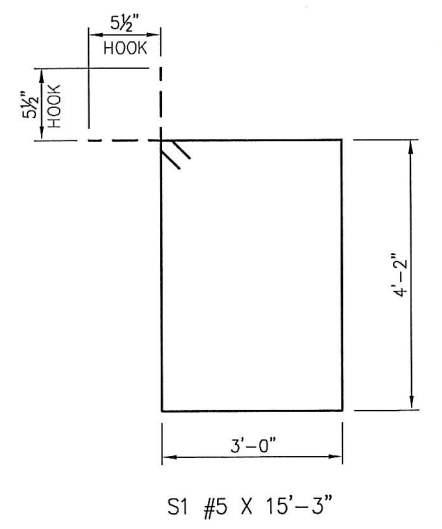
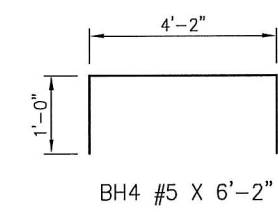
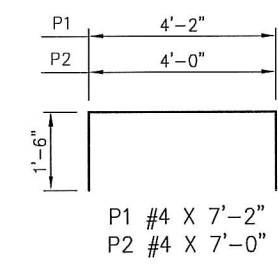
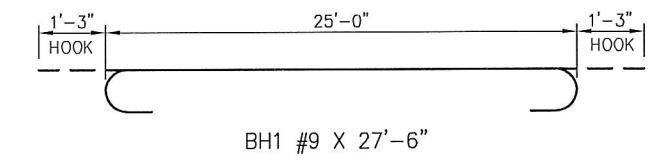


SECTION B-B

BAR LIST - PIER NO. 1

MARK	SIZE	NO.	FORM	LENGTH
BH1	#9	8	BNT.	27'-6"
BH2	#9	8	STR.	25'-0"
BH3	#5	10	STR.	25'-0"
BH4	#5	10	BNT.	6'-2"
P1	#4	15	BNT.	7'-2"
P2	#4	18	BNT.	7'-0"
S1	#5	44	BNT.	15'-3"
TWO DRILLED SHAFTS ①				
D1	#10	28	STR.	57'-11"
DS1	W20	2	SPIRAL	1039'-9"

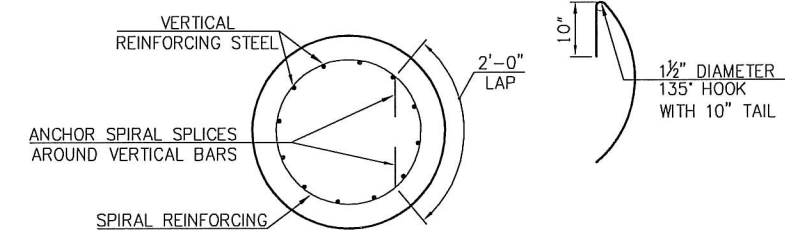
① INCLUDED IN PRICE BID PER LINEAR FOOT OF DRILLED SHAFT.



ROLLER INSTALLATION


DETAIL OF CONCRETE ROLLER

NOTE: CONCRETE USED IN THE CONCRETE ROLLERS SHALL HAVE A MINIMUM 28 DAY COMPRESSIVE STRENGTH OF 4,000 P.S.I. SLAB BOLSTERS, HIGH CHAIRS AND PLASTIC ROLLERS SHALL NOT BE SUBSTITUTED FOR THE CONCRETE ROLLERS.



DETAIL OF SPIRAL REINFORCING SPLICE

NOTE: SPIRAL BARS SHALL CONFORM TO AASHTO M-32. SPIRAL BAR LENGTH DOES NOT INCLUDE LAP. IF LAP IS REQUIRED, THE LENGTH OF THE LAP SHALL BE AS SHOWN.


Michael B. Simmons
 MICHAEL B. SIMMONS, P.E. NO. 24576

BR. 181A OVER LITTLE DEEP FORK BRIDGE "A"	CREEK COUNTY	Design	MZV	11/16
DETAILS OF PIER (SHEET NO. 2 OF 2)		Detail	MZV	11/16
		Check	MBS	11/16
STATE OF OKLAHOMA		Job Piece No.	29407(04)	
GUY ENGINEERING SERVICES, INC.		Sheet	Engr. GUY	
JOB NO. 29407(04)		SHEET NO.		B004

Monday, June 12, 2017 2:25:08 PM
 V:\13-850 Br 181A Little Deep Fork Ck- Creek 3\STRUCTURAL\DWG\850-PIER.dwg